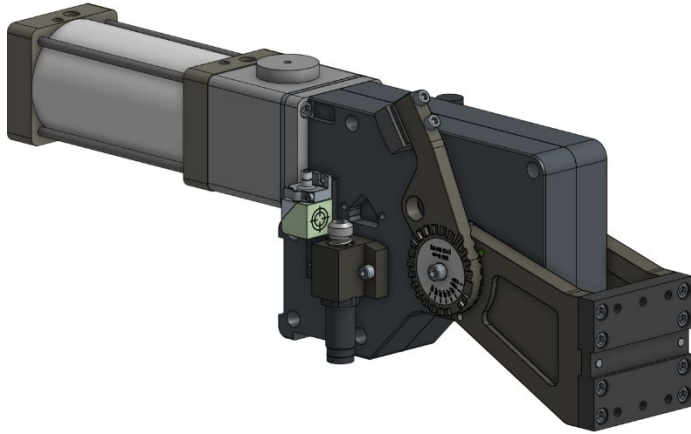


TPE125, ENCLOSED TECH-PIVOT



The TPE125 (125mm Bore) Enclosed Tech-Pivot is a pneumatic rotating unit ideal for industrial welding and fixturing applications. Our unique design offers a fully adjustable opening angle for tooling flexibility. Integrated shocks and hardened stop surfaces assure accuracy and repeatability. Many configurations are available to meet your needs.

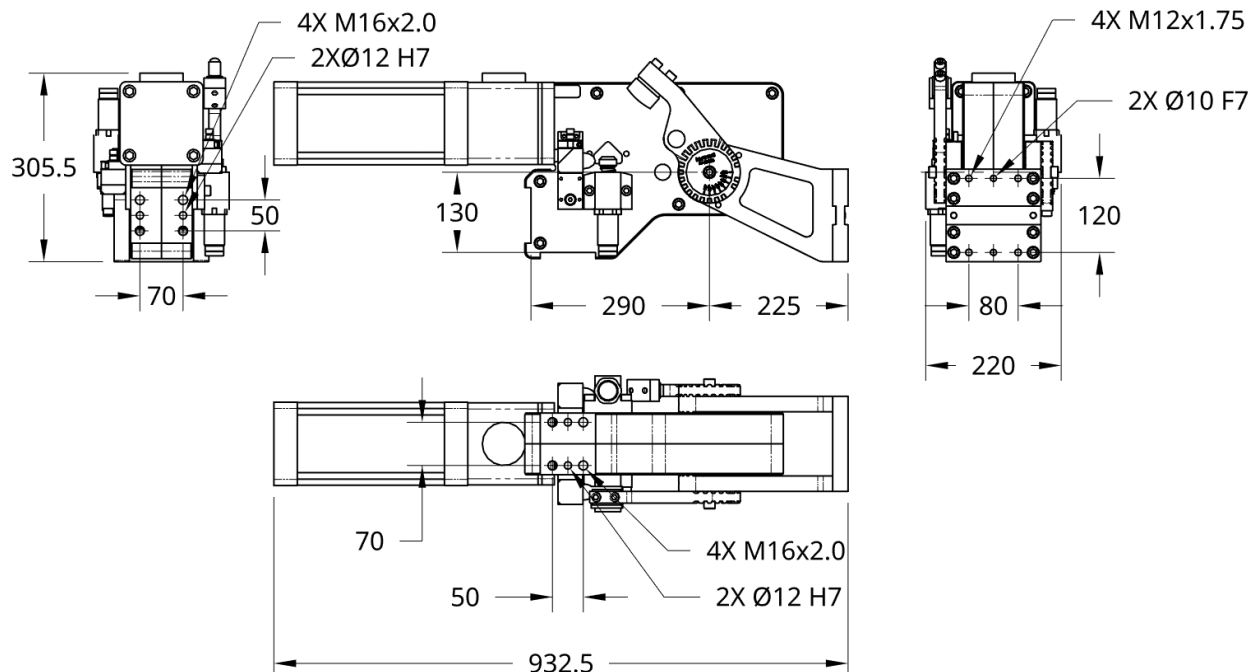
Features

- Fully adjustable 15° to 120°
- Quickly reconfigurable in 15° increments
- Integrated lockout pin hole
- Integrated adjustable shocks
- Open/Close switch options
- 2 mounting surfaces for horizontal and vertical
- Enclosed design for weld debris protection

Technical Overview

Item Weight	65 kg, [143.5 lbs]
Overall Dimensions	933 x 306 x 220 mm (dimensions vary depending on options)
Rotation Angle(s)	0 to 120° rotation with 15° increments (15°, 30°, 45°, 60°, 75°, 90°, 105°, 120°)
Pneumatic Cylinder	125mm bore, 230mm stroke (for full 120° rotation)
Operating Pressure	4 -6 bar [58-87 psi]

Physical Dimensions



Ordering Information

TPE125 - 120 - V1 - L - 1 - N - X - M

MIRROR

M MIRRORED

LEAVE BLANK FOR STANDARD

SWITCHES

X NO SWITCHES

40x20 CUBE SWITCH READY

1 P+F CUBE SWITCH

2 TURCK CUBE SWITCH

CYLINDER PORT TYPE

G 1/2 ISO G

N 1/2 NPT

CYLINDER PORT POSITION

1 POSITION 1

2 POSITION 2

3 POSITION 3

4 POSITION 4

CYLINDER ROD LOCK

L WITH ROD LOCK

SADDLE ORIENTATION

H1 HORIZONTAL, STANDARD

H2 HORIZONTAL, OPPOSITE

***H2 ONLY AVAILABLE 15-90 DEGREES**

V1 VERTICAL, STANDARD

V2 VERTICAL, OPPOSITE

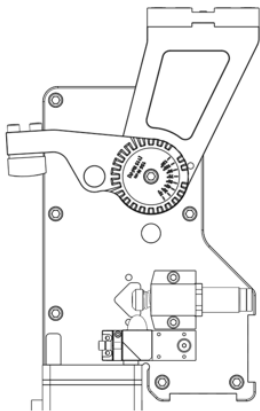
OPENING ANGLE

15, 30, 45, 60, 75, 90, 105, 120

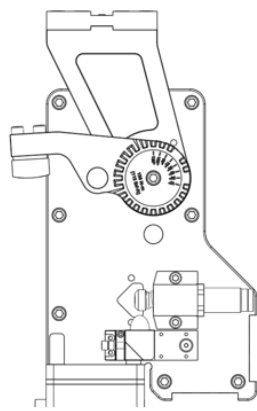
MODEL NUMBER

TECH-PIVOT ENCLOSED, 125mm BORE

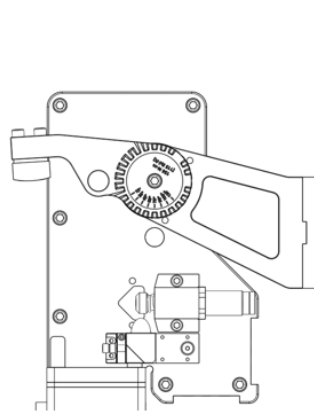
Saddle Orientation Options



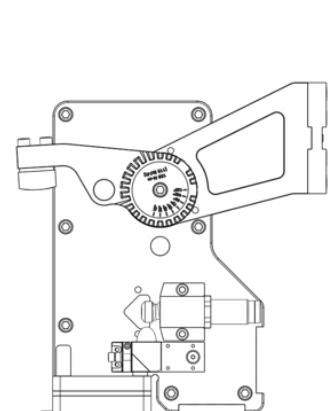
**H1 – HORIZONTAL
STANDARD**



**H2 – HORIZONTAL
OPPOSITE
(90° MAX OPENING!)**

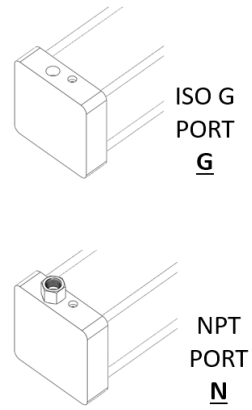
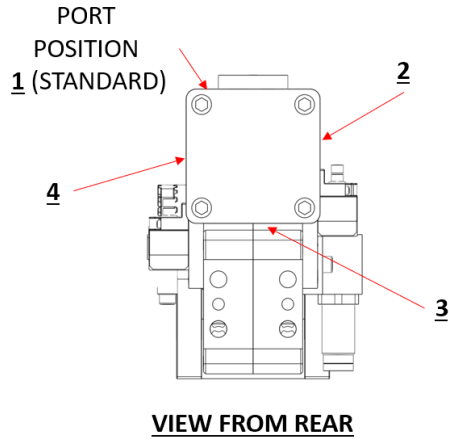


**V1 – VERTICAL
STANDARD**

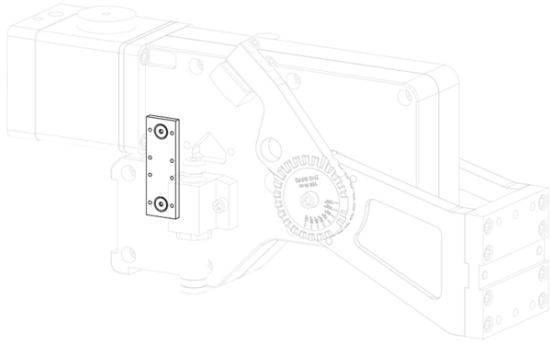


**V2 – VERTICAL
OPPOSITE**

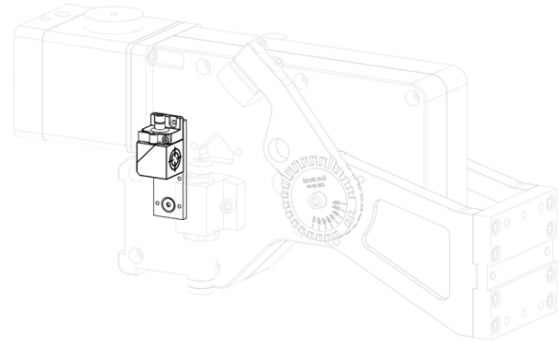
Cylinder Orientation Options



Switch Ordering Options

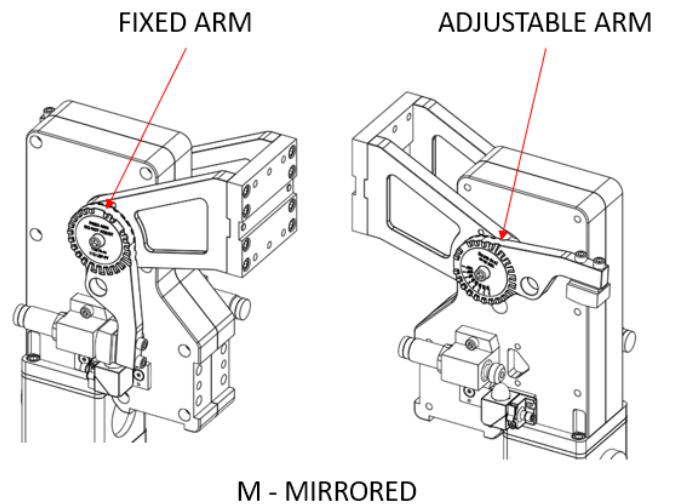
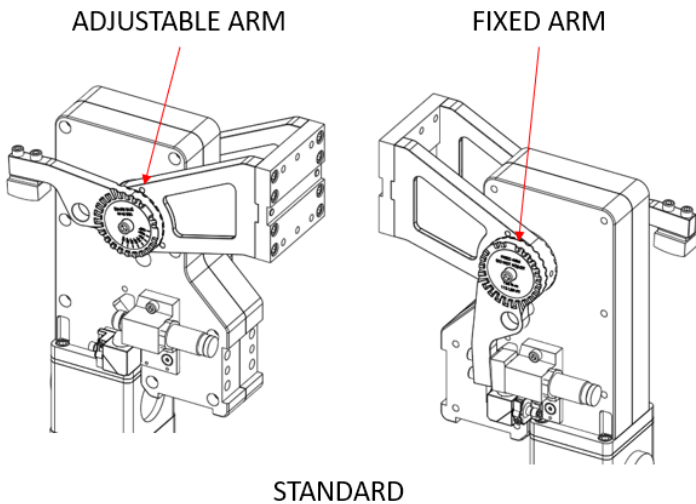


X – NO SWITCHES
Mount plates are included for customer supplied 40x20 Cube Switches



1 – Pepperl+Fuchs, NRB20-L3M-A2-C3-V1
2 – Turck, BI20U-CA40-AP6X2-H1141/S1590 W/BS2.0
(2) 40x20 Cube Switches, PNP, Installed

Mirror Ordering Options

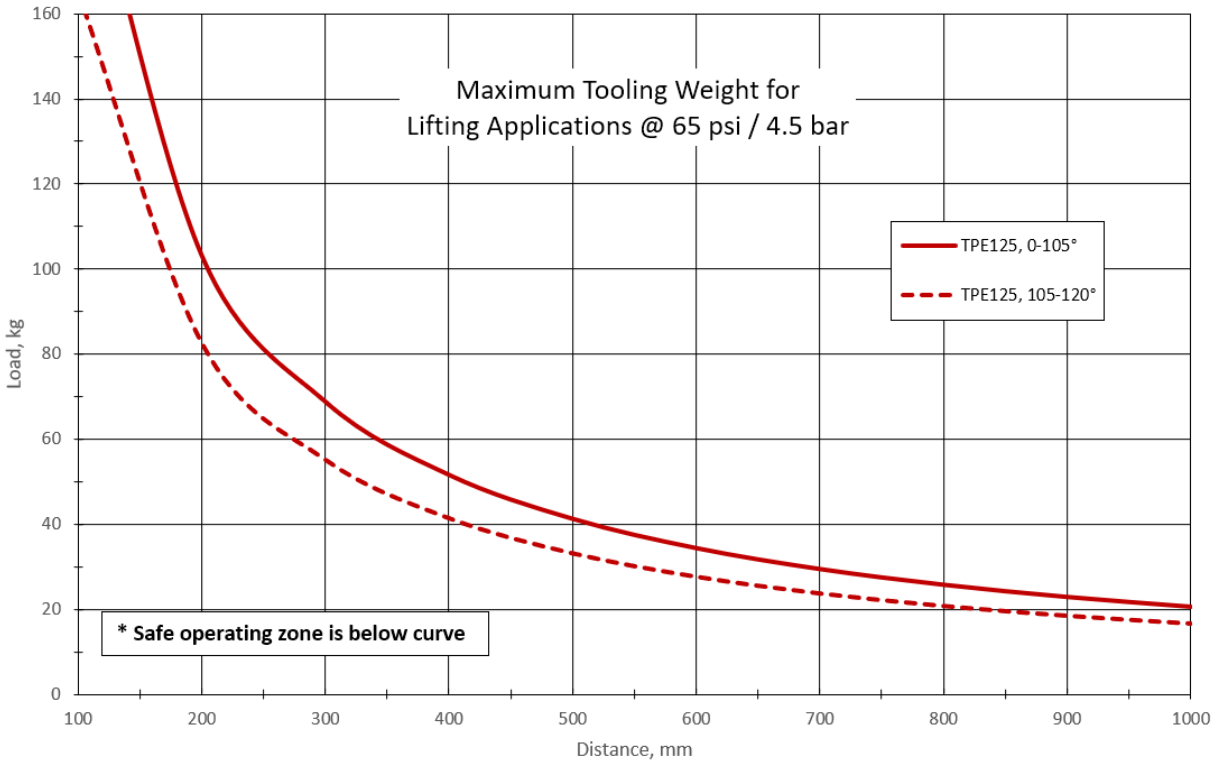


WITH THIS OPTION, ARMS AND SHOCKS ARE FLIPPED, AS SHOWN

Performance Characteristics

Max Torque by Load @ 4.5 bar [65 psi] 0 to 105°	225 N·m [166 lbf-ft]
Max Torque by Load @ 4.5 bar [65 psi] 105 to 120°	162 N·m [119 lbf-ft]
Operating Speed 0 to 120° @ 100% Loading Capacity	2 seconds to open, 4 seconds to close
Operating Speed 0 to 120° @ 25% Loading Capacity	1.6 seconds to open, 2.5 seconds to close

Application Loading Curves



Pneumatic Control Circuit Diagram

Cylinder Stroke / Opening Angle	
11.1 mm [0.44 in]	15°
28.5 mm [1.12 in]	30°
48.1 mm [1.89 in]	45°
67.9 mm [2.67 in]	60°
105.8 mm [4.17 in]	75°
124.9 mm [4.92 in]	90°
147.3 mm [5.80 in]	105°
187.1 mm [7.37 in]	120°

