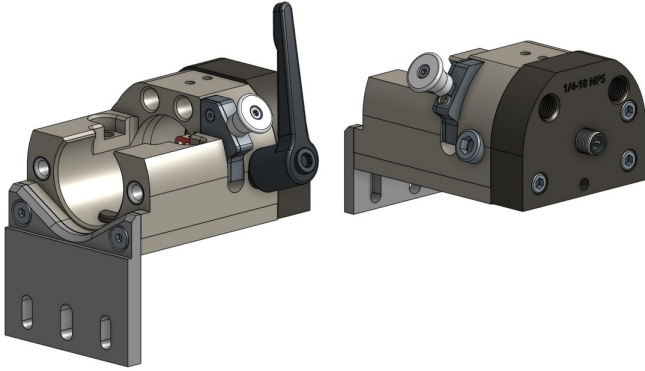


TE-LRR2, TOOLING RECEIVER



The TE-LRR20 Tooling Receiver is an industry standard modular tool changer for industrial pressroom and robotic automation applications. Allows quick change-over between jobs. Air and electrical connections are integrated for automatic coupling with the tooling adapter. There are many options available to easily integrate into new or existing tri-axis, crossbar or robotic automation.

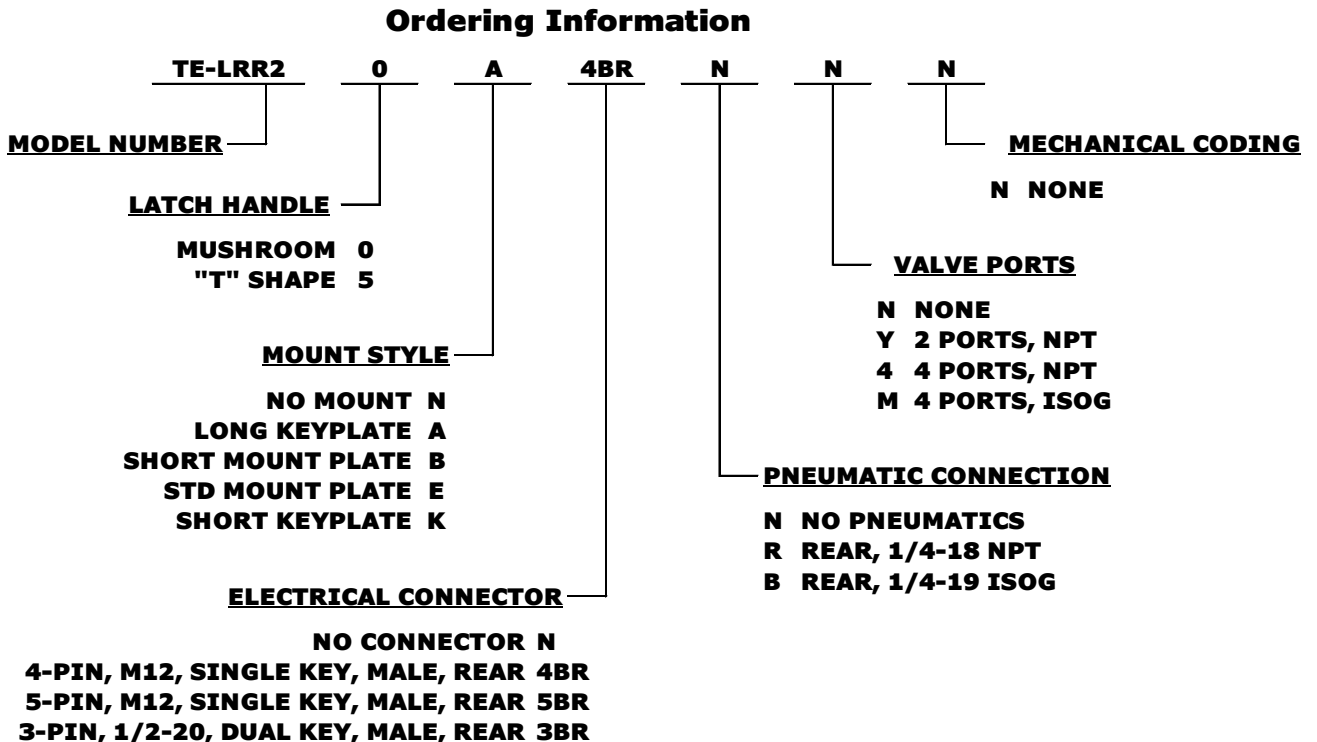
Features

- Plug and Play compatibility
- Quick change-over for tooling fingers
- Pneumatic & Electric Options
- Mount Options

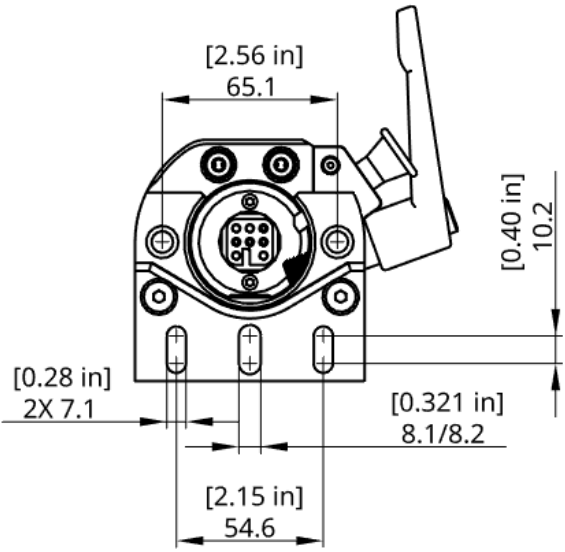
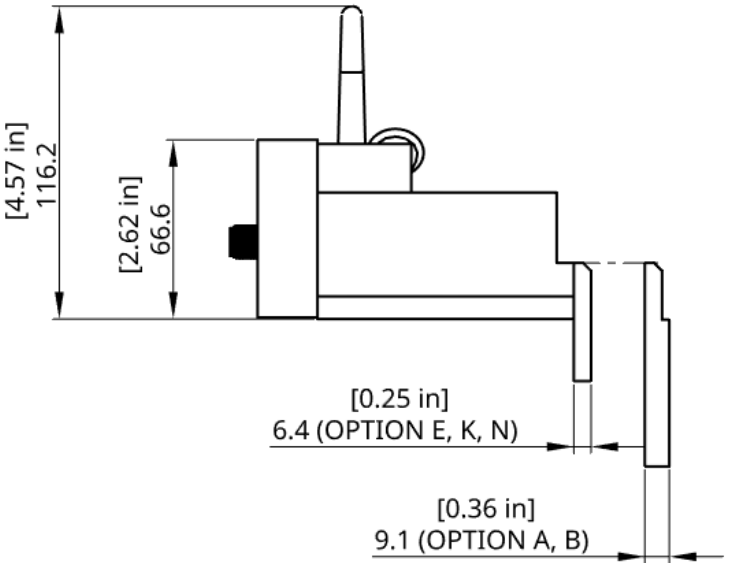
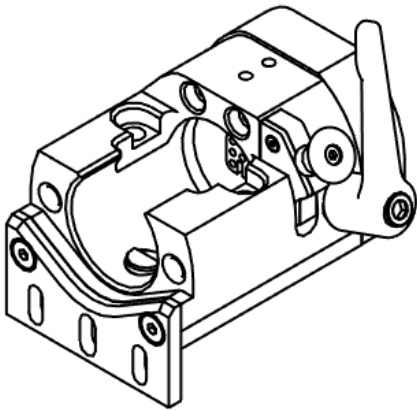
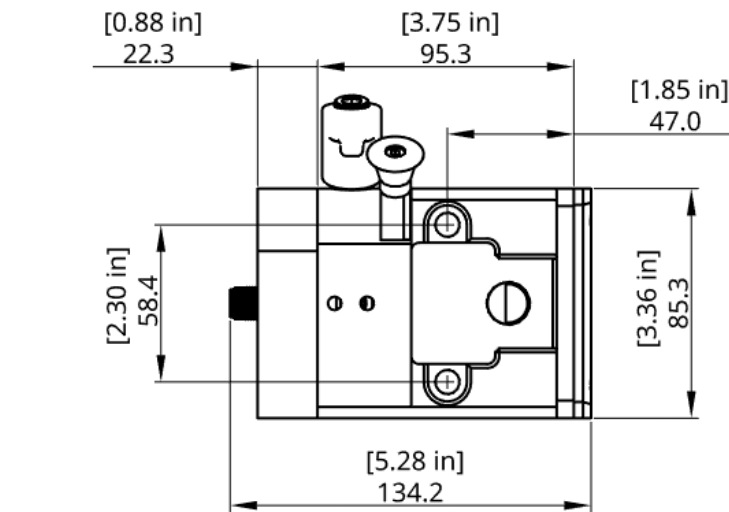
Technical Overview

Item Weight	1.4 kg, [3.0 lbs]
Overall Dimensions	135 x 85 x 66 mm [5.3 x 3.4 x 2.6 inches]
Operating Pressure	2 -8 bar [30-120 psi]
Operating Voltage	10-30 vdc typical

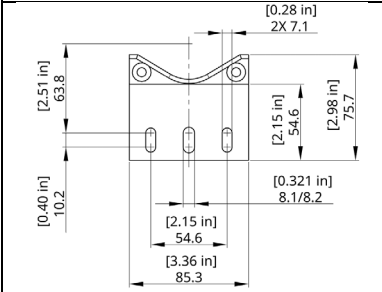
Ordering Information



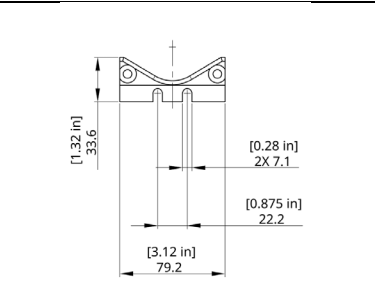
- Contact Tech Rim for additional options



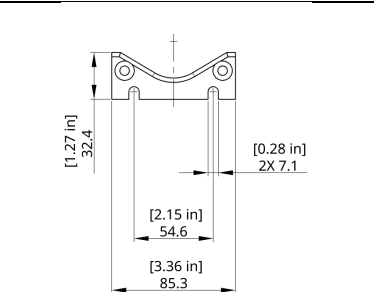
Mount Plate (K) Shown



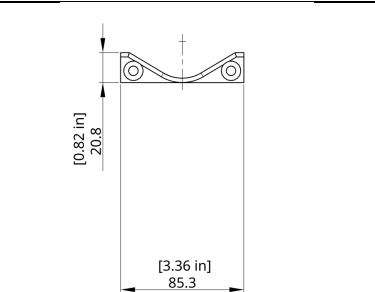
Long Keyplate (A)



Short Mount Plate (B)



Std Mount Plate (E)



No Plate (N)